

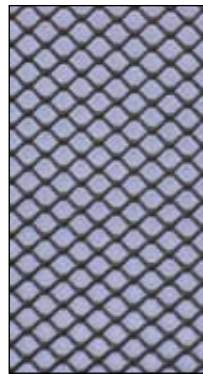
Simple Efficient Effective

Install Allcoast Gutterguard and enjoy:

- ✓ Maintenance-free gutter protection
- ✓ Clean and clear rainwater collection
- ✓ Prolonged life for gutters and valleys
- ✓ Reduced chance of internal flooding
- ✓ Gutter protection from bushfire hazards
- ✓ Protection from birds and vermin entering the gutters or roof
- ✓ Additional style and value to your home



Specifications



Aluminium Mesh

- Expanded premium commercial grade aluminium
- Aperture 3.5mm
- Strand thickness 1mm
- Polyester based powder coating designed for harsh Australian conditions
- Complies with AS3959-2009 (Building in bushfire prone areas)
- Spread of flame index of 0 (CSIRO tested)
- 15 year product warranty
- Available in a range of colours



Polyethylene Mesh

- Proudly Australian made
- High Density Polyethylene (HDPE)
- Only 100% virgin, food grade, HDPE raw materials
- Manufactured using industry leading extrusion technology
- Strand thickness 2mm
- Aperture 3.7mm
- 10 year product warranty
- Available in a range of colours

T. (02) 4393 3122
F. (02) 4393 3266
www.allcoastgutterguard.com.au
1/2 Doherty Close Warnervale NSW 2259



Our partner Tapex, manufactures the mesh at their facility in Sydney. A proudly Australian owned, 4th generation business, Tapex has a long 52 year history behind it. The R&D and testing facility located at the Sydney site is world class and assists Tapex to provide a consistently high quality product. Tapex is accredited to AS/NZS ISO 9001-2000. Combine this with state of the art manufacturing equipment to ensure the highest of standards.

Tapex also offers a manufacturer's warranty on its mesh which gives fantastic peace of mind when choosing Allcoast Gutterguard Pty Ltd.



Gutter Protection Solutions

- ✓ Maintenance-free gutter protection products
- ✓ CSIRO tested and local council approved
- ✓ Suitable for tiled and metal roofs
- ✓ Offers protection from pests and leaf litter



Allcoast Gutterguard provides peace of mind

Once the micro screen mesh has been installed only the smallest of particles can gain access to the guttering. The pitch of the roof now enables all of the debris to slide onto the mesh and over the guttering while the rainwater passes straight through.

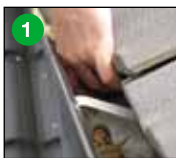
Many local councils now demand appropriate gutterguard be installed to any building constructed in bushfire prone areas. Our aluminium gutterguard complies with the Australian Standard for Building in Bushfire Prone Areas (AS. 3959.2009).

Our Gutterguard is available in a range of traditional and modern colours ensuring an appropriate colour for your roof.

Suitable for tiled and metal roofs including valleys and box guttering.



Installation procedure



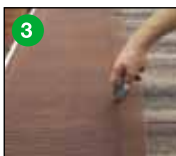
STEP 1 Cleaning gutters

Nobody enjoys cleaning gutters, however it is important that all gutters, valleys and downpipes are thoroughly cleaned prior to installation. Your Allcoast Gutterguard technician will clean and clear all debris as part of the service.



STEP 2 Attaching the mesh to the gutters

After the gutters are clear the mesh is screwed onto the gutters' outer edge. A small Colorbond capping is installed to neatly and firmly secure the mesh to the guttering.



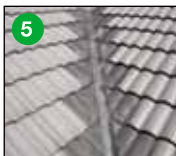
STEP 3 Shaping the mesh to your roof

Some strategically positioned cuts are made in the guttermesh to help shape it to the contours of your roof. This fabricating process ensures the guttermesh looks good and works even better.



STEP 4 Attaching the mesh to your roof

On tiled roofs the second row of tiles are lifted slightly and the guttermesh tucked underneath. On a Colorbond roof, specially designed clips are screwed into the roof to hold the mesh down firmly against the corrugations.



STEP 5 Covering the valleys

Uniquely our products are also adaptable to roof valleys. The mesh extends over the valley irons ensuring that from end to end and top to bottom your roof gutters are protected.



STEP 6 Securing around hips and gables

The final step in the installation process is securing the guttermesh around the hips and gables. High quality roof and gutter silicon is used to fasten the mesh to the ridge capping so that no leaves can get in anywhere.



STEP 7 Never clean guttering again.

All products are backed by a manufacturer's warranty and a statutory workmanship guarantee. Eliminating gutter cleaning, reducing bushfire hazards, and enhancing water collection quality are some of the benefits.

Suitable for use on most roof profiles

